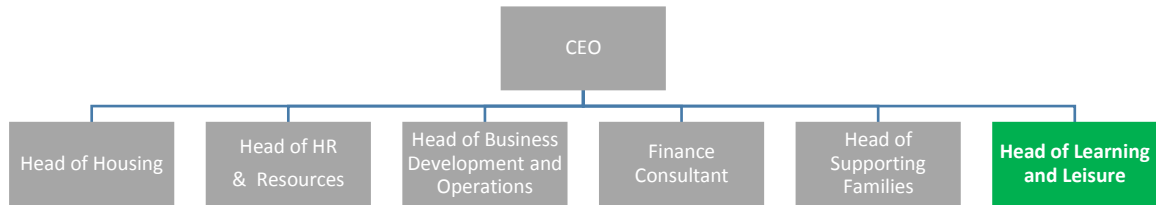


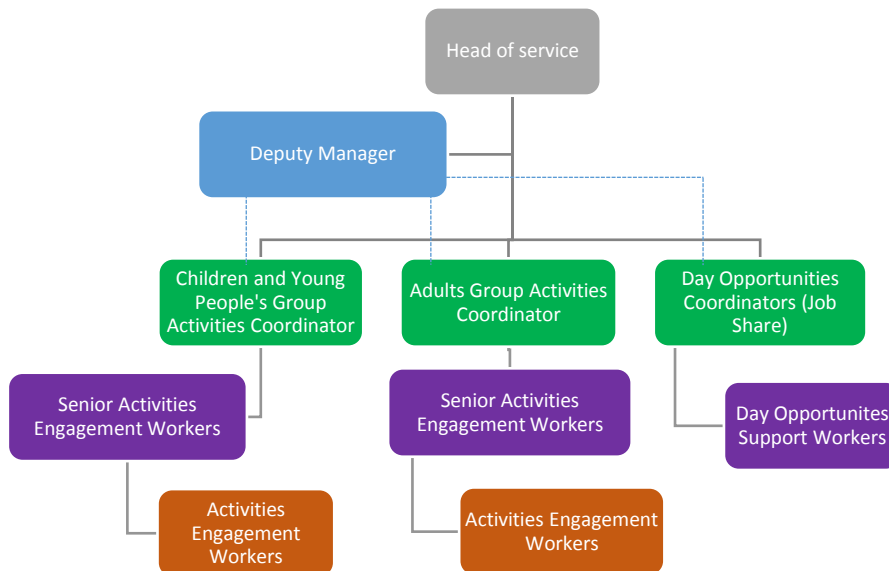
Background Information for Candidates

This information should be read alongside the Job Description and Person Specification. This is a Senior Management position that will work closely with the Head of Service and Service Coordinators, as well as colleagues and service users from across the organisation in order to develop the Learning and Leisure Service and contribute to the wider organisations service delivery.

Senior Management Team:



Learning & Leisure Team:



About You

You will be able to draw on your relevant experience and knowledge gained in similar roles, and demonstrate an enthusiastic and ambitious approach to developing the post as well as a commitment to being a constructive and integral member of our Senior Management Team.

We do not necessarily expect candidates to have previous experience in all aspects of the role and are primarily looking for someone who can demonstrate a positive attitude, a pragmatic approach and the ability to use initiative and be resourceful. The post holder should have the confidence and integrity to act responsibly and to consult and negotiate with relevant colleagues and other professionals to make balanced decisions and deal with complex and sensitive issues.

About Centre 404

Centre 404 was established in 1951 by a group of family carers who came together to campaign for better support and services for their children and families.

Centre 404 has 3 main areas of service delivery; Supported Housing and Independent Living, Supporting Families, and Learning and Leisure. These services deliver practical and emotional support to children and adults with learning disabilities and Autism, as well as their families, in line with Centre 404 values (found at the end of this document).

These services are predominantly managed from our community centre and offices on Camden Road, from which we also deliver many groups and activities and community events. More information is available on our website: <https://centre404.org.uk/>.

About the Learning & Leisure Service

The Learning & Leisure Service works with children, young people and adults with learning disabilities. The services that the team provide aim to give people a safe environment, where they are able to come, be themselves and take part in fun activities both in our centre and in the wider community.

We are committed to providing meaningful opportunities and the chance for all service users, staff and volunteers to develop their skills and allow them to be at their best when working within the Learning and Leisure team.

We currently deliver after school groups for children aged between 5-18 years Monday to Friday, and a Saturday morning group every week during term time. We have eight different activity groups for young people and adults aged 16 years and above during term time, which mostly run in the evening.

We deliver a bespoke Day Opportunities Service throughout the year for up to 12 adults. This is primarily a complex needs service specialising in support for people with Autistic Spectrum Condition, behaviours that may challenge, and additional physical support needs.

We also deliver a small outreach service throughout the year to children and young people aged 5-18 in Camden and Islington. We provide individual support to children and young people who would otherwise find it difficult to access group activities, often delivering a community based activity such as swimming or trips to places of interest.

Finally, we deliver holiday play schemes to children and young people aged 8-16 years in both Enfield and Islington. The Islington play scheme is always comprised of trips to various places of interest, designed to increase engagement with the local community as well as to improve physical activity and wellbeing. In Enfield we work from a local SEN school, and deliver a service to a small group of children and young people with very complex needs who all require 1:1 support.

Currently, we have a team of Senior Activities Engagement Workers who deliver our children's and adults activity groups, plus a growing team of Engagement Workers working across all of the groups.