



Learning Disability England

Report and Accounts

2023 - 2024



About Learning Disability England



Learning Disability England exists to make life better for and with people with Learning Disabilities and their families.

Learning Disability England is bringing people and organisations together to create a movement for change where people with learning disabilities, families, friends and paid supporters come together on an equal basis.



Learning Disability England is the member-led national organisation. Membership is organised into 3 groups of different experiences or voice groups



People with learning disabilities and Self-advocacy organisations;

Family and friends and family carer organisations

Paid supporters and partners (including people and organisations working in social care, health, universities, policy or training)

Learning Disability England Trustee report



What this is about



This is the Annual Report from the Learning Disability England Trustees

It looks at the year from 1 April 2023 to 31st March 2024.



The report and accounts tell people about the work that Learning Disability England has done.

It also tells people how it has spent the money.



Learning Disability England must publish its report and accounts every year.

This is because it is a registered charity.



The report has been put together by the Board of Trustees of Learning Disability England.

[Find out more about the Trustees here](#)

The aims and objectives of Learning Disability England



Learning Disability England is a membership organisation.



Members can be people with learning disabilities, their families, friends, and paid supporters.

Organisations and groups can be members too.



Learning Disability England brings together members to:

- learn from each other.
- work out problems.
- be a louder, stronger voice.

Learning Disability England members share the same aims and values.

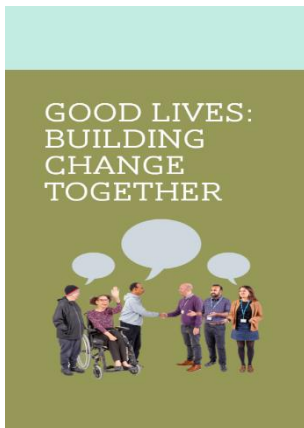
Members must agree with these aims and values when they join.

[Read the aims and values here](#)





Members work with each other on an equal basis to share knowledge and create a movement for change together.



Members work together to build a world where people with learning disabilities have good lives with equal choices and opportunities as others.



At the end of March 2023 there were a total of 683 members.

This was 178 organisation or group members and 483 individual members.



[You can find out more about being a member here](#)



How Learning Disability England makes decisions



Learning Disability England has a [Board of Trustees](#).

The Trustees are responsible for governing the charity.



This means that they make the big decisions.

They make sure Learning Disability England works to the Charity Commission rules and the law.



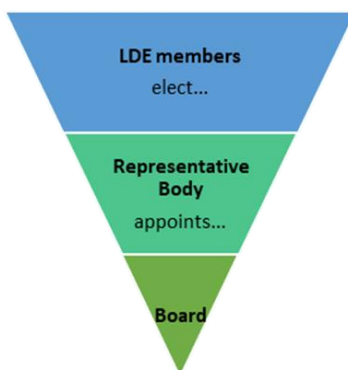
The Board of Trustees works closely with the [Representative \(Rep\) Body](#).

The **Rep Body** makes decisions about what members will work on together.

The Rep Body are elected by members to represent them.

There are 12 Rep Body members representing the three different 'voice groups.

The Rep Body helps make sure Learning Disability England is led by members.





The Chief Executive works with the Trustees and Rep Body to lead Learning Disability England.

There is a small **staff team** of 8 people. Most of the team work part time and work from home across the country.

[Find out about the staff team here](#)



The big priorities Learning Disability England worked on in 2023 - 2024



The work Learning Disability England will prioritise is decided by the Representative (Rep) Body.

[Find out more about the Rep Body here](#)



In 2023 the Rep Body and Trustees worked together on [a Big Plan for 2024 - 2029](#)

It says what Learning Disability England will do to make the vision for change happen.

[Read the Vision for Change here](#)



Our Vision for the future is:

Learning Disability England is supporting a powerful movement for change, making sure that people of all ages with a learning disability are treated equally and are living their good lives.



All Learning Disability England’s work aims to move towards the vision.

The Big Plan says the action Learning Disability England will take and how we will check if we are making a difference.

Read the Big Plan [here](#)

There are 3 big priorities Learning Disability England will work on towards the Vision for the Future:



Rights based approaches are well used
Learning Disability England has and models a rights -based approach in all it does .



People with learning disabilities of all ages and their families are living Good Lives.



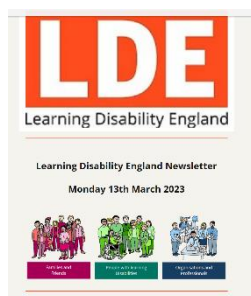
The way that people and society think and feel about people with a learning disability has changed for the better.

What Learning Disability England did between April 2023 – March 2024



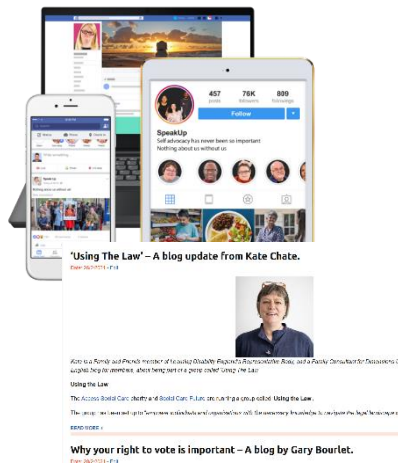
Informing and supporting members.

We helped the three 'voice groups' of our members get the information they needed and also heard from different people about their work or ideas.



We sent 49 weekly or special information newsletters to 2000 people who are members or part of a member organisation or group.

More than half of those people read the newsletter most weeks.



Learning Disability England shares information on the work of members and partners.

We also celebrate success.

Last year we did this through 14 blogs by members hosted on the website and posts on social media.

There were 43,000 visits to the Learning Disability England web site in the year.



Campaigning and influencing on what matters to people with learning disabilities to help people get a good life.

We helped members to be heard on consultations which were important to them. These included:



The Disability Action Plan the government wrote.



The Oliver MacGowan Mandatory training code of conduct

How Social Housing is allocated.



Closing Ticket Offices at train stations

Rules on visits to people living in care services.

Representing the members



As well as members working together on responses to consultations some members have been part of working groups or meetings to represent other members.



This year this included a member of the Rep Body being part of the group working on the guidance for the Down Syndrome Act.

The Social Care All Party Parliamentary Group



There were also member representatives on groups working on Continuing Health Care and Checking services with Care Quality Commission.



Representing members' priorities to inform policy and change attitudes.



[Good Lives](#) brings together people's ideas about what is needed for everyone with learning disabilities to be able to live their good life.

It is led by what people with learning disabilities say is important.

It is a vision for change with actions for everyone who wants to get involved, by campaigning or changing how they work now.



This year Learning Disability England worked with members to take action for Good Lives by

- Sharing examples of Action Towards Good Lives
- Speaking about Good Lives at 14 different events

The Good Lives Manifesto



More than 400 Learning Disability England members were part of making the manifesto.

It is built from a number of campaigns and actions, bringing people and organisations together on what they think are the most important priorities for the next government to take action on to make [Good Lives](#) possible.



Supporting good practice and finding solutions through the 'voice groups' working together.

We bring members together to learn from each other or understand new ideas or research together.



This year we held:

- 10 members network meetings
- 7 members only webinars
- 3 public webinars



More than 700 places were used at the meetings.

These meetings were about research findings, information on rights, or members sharing their work.



There were three Learning Disability England conferences in March 2024.

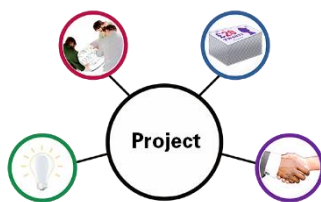
550 people came to the 3 conferences.

At the conferences 56 different speakers shared what they are doing to support Good Lives.

People shared work and ideas on

- Getting involved in politics.
- Campaigning together
- Action for Good Lives health chapter

You can find out more and see the recordings [here](#)



Learning and supporting partners through projects or research.

Learning Disability England works with partners and members to help them get involved in issues which members think are important.



[Annual Health Checks for people with learning disabilities from Black Asian and minoritised ethnic groups](#) was a partnership with the Race Equality Foundation.



It builds on other projects about the experiences of people from ethnic minority communities with learning disabilities and their families.

At Learning Disability England, we will be carrying on working to support the inclusion of people with learning disabilities from ethnic minorities by changing how we work as well as promoting the voice of people from ethnic minorities.



Learning Disability England is one of six organisations in the [Valuing People Alliance](#).



As one of the members of the Health and Wellbeing Alliance, they work with the Department of Health and Social Care, NHS England, and the UK Health Security Agency. They help to ensure policies and plans include people with learning disabilities.

There was also work on:

- Including people in research projects as part of a project called [No Research About Us Without Us](#)
- Housing choices and rights
- Advocacy and people being heard



Partnerships are important to Learning Disability England

Most of our work is done in partnership with members or other partners.



JMS Trust is an important partner, and we share a worker with them.



Learning Disability England is part of different groups and memberships to help members learn about or join in with others work.



This includes [Citizen Network](#) and [Inclusion Europe](#)



Risks

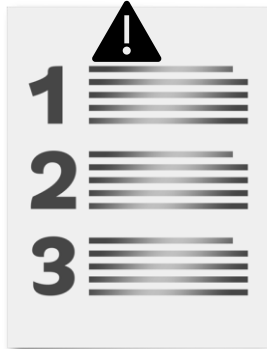
The Trustees look at the risks Learning Disability England might face.

Risks are the things that might go wrong.





Then they decide what they can do to make it less likely that these things happen, or to protect Learning Disability England if they do happen.



The biggest risks Trustees have worked on this year are:

- How many memberships are joining or staying part of Learning Disability England
- Having the right jobs in the organisation so Learning Disability England is strong and makes a difference.
- The economic and political changes that are happening.



To try to keep Learning Disability England strong the Trustees decided to

- Recruit an operations Manager to lead on the administration and finance including managing memberships.
- Invest in a new system for managing memberships so it is easier to join and help all members renew.



About the money



The total income for the year was £297,257

Income is the money that came into Learning Disability England.



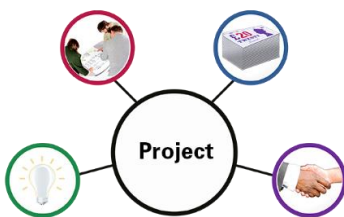
£103,114 came from grant funding.

£131,431 came from membership payments.

£12,037 came from donations.

£36,972 came from conferences, workshops, and advice.

Learning Disability England got money from/for these grants and projects:



- JMS Trust
- VCSE Health and Wellbeing Alliance
- RTR Foundation and Bailey Thomas Foundation



The biggest things Learning Disability England spent money on were:

- £171,069 on staff costs
- £38,668 working on projects and events



The total funds that were brought forward were £205,921.

This means money that Learning Disability England still had money in the bank at the end of the year.



Review of an independent examiner



Each year our annual accounts must be checked by an independent examiner.



An independent examiner is someone who is a qualified accountant and separate from the organisation.



The independent examiner has checked these accounts.

They found that these accounts followed all the rules.



More information



You can find out more by looking at the website.
<https://www.learningdisabilityengland.org.uk/>



If you have any questions, please email
info@LDEngland.org.uk or phone 0300 111 044.

Signed by Sarah Maguire on behalf of the Trustees



Registered number
04233275
Registered Charity number
1092587

Learning Disability England

Accounts

31 March 2024

incorporating P&W Social Accountants

Independent Examiners' Report to the Trustees of Learning Disability England

Respective responsibilities of charity trustees and examiner

The trustees (who are also the directors of the company for the purposes of company law) are responsible for the preparation of the accounts. The charity's trustees consider that an audit is not required for this year under section 144 of the Charities Act 2011 (the Charities Act) and that an independent examination is needed. The charity's gross income exceeded £250,000 and

I am qualified to undertake the examination by being a qualified member of
Institute of Chartered Accountants in England and Wales.

Having satisfied myself that the charity is not subject to audit under company law, and is eligible for independent examination, it is my responsibility to:

- examine the accounts under section 145 of the 2011 Charities Act,
- to follow the procedures laid down in the general Directions given by the Charity Commission (under section 145(5)(b) of the Charities Act; and
- state whether particular matters have come to my attention.

Basis of independent examiner's statement

My examination was carried out in accordance with general Directions given by the Charity Commission. An examination includes a review of the accounting records kept by the charity and a comparison of the accounts presented with those records. It also includes consideration of any unusual items or disclosures in the accounts, and seeking explanations from the trustees concerning any such matters. The procedures undertaken do not provide all the evidence that would be required in an audit, and consequently no opinion is given as to whether the accounts present a 'true and fair' view and the report is limited to those matters set out in the statement below.

Independent examiner's statement

In connection with my examination, no matter has come to my attention to indicate that:

- accounting records have not been kept in accordance with section 386 of the Companies Act 2006;
- the accounts do not accord with such records;
- where accounts are prepared on an accruals basis, whether they fail; or to comply with relevant accounting requirements under section 396 of the Companies Act 2006, or are not consistent with the Charities SORP (FRS102)
- any matter which the examiner believes should be drawn to the attention of the reader to gain a proper understanding of the accounts.



P&W Social Accountants
10 Newent Road
Birmingham
B31 2ED

14th June 2024

**Learning Disability England
Statement of Financial Activities
incorporating an Income and Expenditure Account
as at 31 March 2024**

	Notes	Current year Unrestricted Funds 2024 £	Current year Restricted Funds 2024 £	Current year Total Funds 2024 £
Income & Endowments				
Donations	2	12,037	-	12,037
Income from charitable activities	2	226,187	45,330	271,517
Other income	2	13,703	-	13,703
Total income		<u>251,927</u>	<u>45,330</u>	<u>297,257</u>
Expenditure				
Expenditure on charitable activities	3	211,878	45,330	257,208
Total expenditure		<u>211,878</u>	<u>45,330</u>	<u>257,208</u>
Net (expenditure) / income for the year		40,049	-	40,049
Transfers between funds	11	-	-	-
Net (expenditure) / income after transfers		<u>40,049</u>	<u>-</u>	<u>40,049</u>
Net movement in funds		<u>40,049</u>	<u>-</u>	<u>40,049</u>
Reconciliation of funds:-				
Total funds brought forward		165,872	-	165,872
Total funds carried forward		<u>205,921</u>	<u>-</u>	<u>205,921</u>

The statement of financial activities includes all gains and losses in the year.

All incoming resources and resources expended derive from continuing activities.

Approved by order of the board of trustees on 14th June 2024 and signed on its behalf by:

**Learning Disability England
Statement of Financial Activities
incorporating an Income and Expenditure Account
1 April 2022 to 31 March 2023**

	Notes	Prior Year Unrestricted Funds 2023	Prior Year Restricted Funds 2023	Prior Year Total Funds 2023
Income & Endowments				
Donations	2	7,188	-	7,188
Income from charitable activities	2	227,656	108,220	335,876
Other income	2	14,078	-	14,078
Total income		<u>248,922</u>	<u>108,220</u>	<u>357,142</u>
Expenditure				
Expenditure on charitable activities	3	247,617	125,735	373,352
Total expenditure		<u>247,617</u>	<u>125,735</u>	<u>373,352</u>
Net (expenditure) / income for the year				
Transfers between funds	11	-	-	-
Net (expenditure) / income after transfers		<u>1,305</u>	<u>(17,515)</u>	<u>(16,210)</u>
Net movement in funds		<u>1,305</u>	<u>(17,515)</u>	<u>(16,210)</u>
Reconciliation of funds:-				
Total funds brought forward		164,567	17,515	182,082
Total funds carried forward		<u>164,567</u>	<u>17,515</u>	<u>182,082</u>

The statement of financial activities includes all gains and losses in the year.

All incoming resources and resources expended derive from continuing activities.

Learning Disability England
Registered number:
Balance Sheet
as at 31 March 2024

04233275

	Notes	2024 £	2023 £
Fixed assets			
Tangible assets	8	364	716
		364	-
Current assets			
Debtors	9	56,979	35,316
Cash at bank and in hand		389,114	342,059
		446,093	377,375
Creditors: amounts falling due within one year	10	(240,536)	(212,219)
Net current assets		205,921	165,156
Net Assets		205,921	165,872
The funds of the charity			
Unrestricted funds	11	188,921	165,872
Designated funds	11	17,000	-
Restricted funds	11	-	-
Total funds		205,921	165,872

The Trustees are satisfied that the charitable company is entitled to exemption from the requirement to obtain an audit under section 477 of the Companies Act 2006. However, in accordance with section 145 of the Charities Act 2011, the accounts have been examined by an Independent Examiner.


The members have not required the company to obtain an audit in accordance with section 476 of the Act.

The Trustees acknowledges their responsibilities for complying with the requirements of the Companies Act 2006 with respect to accounting records and the preparation of accounts.

The accounts have been prepared and delivered in accordance with the special provisions applicable to companies subject to the small companies regime.

The accounts have been prepared in accordance with the provisions in Part 15 of the Companies Act 2006 applicable to companies subject to the small companies regime and in accordance with the Financial Reporting Standard for Smaller Entities (effective April 2008).

Approved by order of the board of trustees on 14th June 2024 and signed on its behalf by:



Sarah Maguire
Director and Trustee

**Learning Disability England
Notes to the Accounts
Statement of Financial Activities
as at 31 March 2024**

1 Accounting policies

Basis of preparation

The financial statements of the charitable company, which is a public benefit entity under FRS 102, have been prepared in accordance with the Charities SORP (FRS 102) 'Accounting and Reporting by Charities: Statement of Recommended Practice applicable to charities preparing their accounts in accordance with the Financial Reporting Standard applicable in the UK and Republic of Ireland (FRS 102) (effective 1 January 2019)', Financial Reporting Standard 102 'The Financial Reporting Standard applicable in the UK and Republic of Ireland' and the Companies Act 2006. The financial statements have been prepared under the historical cost convention.

The reporting currency is £ Sterling.

Tangible fixed assets

Tangible fixed assets are measured at cost less accumulative depreciation and any accumulative impairment losses. Depreciation is provided on all tangible fixed assets at rates calculated to write off the cost, less estimated residual value, of each asset evenly over its expected useful life, as follows:

Plant & equipment	over 4 years
-------------------	--------------

Creditors

Short term creditors are measured at transaction price (which is usually the transaction price).

Grant income is deferred if it relates to specific expenditure which has not yet been incurred. This expenditure will be a condition of the grant.

Debtors

Debtors are measured at their recoverable amount at the balance sheet date.

Financial Instruments

The charity has financial assets and financial liabilities of a kind that qualify as basic financial instruments. They are recognised at transaction value and subsequently measured at their settlement value.

Income

All income is recognised in the statement of financial activities once the charity has entitlement to the funds, it is probable that the income will be received and the amount can be measured reliably.

Donations are accounted for on a receivable basis.

Grants are credited to the statement of financial activities when received or receivable whichever is earlier. Where unconditional entitlement to grants receivable is dependent upon fulfilment of conditions within the Charity's control, the income is recognised when there is sufficient evidence that conditions will be met. Where there is uncertainty as to whether the Charity can meet such conditions the incoming resource is deferred.

Expenditure

Liabilities are recognised as expenditure as soon as there is a legal or constructive obligation committing the charity to that expenditure, it is probable that a transfer of economic benefits will be required in settlement and the amount of the obligation can be measured reliably. Expenditure is accounted for on an accruals basis and has been classified under headings that aggregate all cost related to the category. Where costs cannot be directly attributed to particular headings they have been allocated to activities on a basis consistent with the use of resources.

Costs allocated to charitable activities include the direct costs of providing services and running projects.

Learning Disability England
Notes to the Accounts
Statement of Financial Activities
as at 31 March 2024

1 Accounting policies (*continued*)

Pensions

Employees of the charity are entitled to join a defined contribution scheme. The pension costs represent amounts payable by the charity during the period.

Taxation

The charity is exempt from corporation tax on its charitable activities.

Fund Accounting

Unrestricted general funds may be used in accordance with the charity's objects at the discretion of the trustees. Designated funds are amounts set aside by the trustees out of unrestricted general funds for specific future purposes or projects.

Restricted funds can only be used for particular restricted purposes within the objects of the charity. Restrictions arise when specified by the donor or when funds are raised for a particular restricted purpose.

**Learning Disability England
Notes to the Accounts
Statement of Financial Activities
as at 31 March 2024**

2 Income

1 April 2023 to 31 March 2024

	Current year Unrestricted 2024	Current year Restricted 2024	Current year Total Funds 2024
	£	£	£
Donations			
Donations	12,037	-	12,037
Total Donations	<u>12,037</u>	<u>-</u>	<u>12,037</u>
Charitable Activities			
Advice, conferences and training	36,972	-	36,972
Membership Subscriptions	131,431	-	131,431
Grant Income	57,784	45,330	103,114
Total Income from Charitable Activities	<u>226,187</u>	<u>45,330</u>	<u>271,517</u>
Other Income			
Other income	13,703	-	13,703
Total Other Income	<u>13,703</u>	<u>-</u>	<u>13,703</u>
Total Income	<u>251,927</u>	<u>45,330</u>	<u>297,257</u>

Prior Year Income

1 April 2022 to 31 March 2023

	Prior year Unrestricted 2023	Prior year Restricted 2023	Prior year Total Funds 2023
	£	£	£
Donations			
Donations	7,188	-	7,188
Total Donations	<u>7,188</u>	<u>-</u>	<u>7,188</u>
Charitable Activities			
Advice, conferences and workshops	54,373	-	54,373
Membership Subscriptions	102,258	-	102,258
Grant Income	71,025	108,220	179,245
Total Income from Charitable Activities	<u>227,656</u>	<u>108,220</u>	<u>335,876</u>
Other Income	14,078	-	14,078
Total Other Income	<u>14,078</u>	<u>-</u>	<u>14,078</u>
Total Income	<u>248,922</u>	<u>108,220</u>	<u>357,142</u>

Learning Disability England
Notes to the Accounts
Statement of Financial Activities
as at 31 March 2024
3 Expenditure on charitable activities

	2024	2023
	£	£
Direct expenditure (note 4)	240,754	365,422
Support expenditure (note 5)	16,454	7,930
Total	<u>257,208</u>	<u>373,352</u>

4 Direct expenditure on charitable activities

	2024	2023
	£	£
Staff costs (note 7)	171,069	183,986
Conference costs	13,007	13,274
External project delivery and resource costs	14,580	159,643
Insurance	5,280	4,642
Marketing and advertising	245	90
Professional fees	4,425	2,600
Advocate Expenses	11,081	-
Travel	10,793	-
Subscriptions	2,559	-
Room hire	7,715	1,187
Direct expenditure	<u>240,754</u>	<u>365,422</u>

5 Support expenditure on charitable activities

	2024	2023
	£	£
Administrative overheads	598	764
Premises expenses	-	200
Software	7,975	80
Telephone costs	799	768
Web & CRM development & hosting	4,940	3,976
Depreciation	352	352
	<u>14,664</u>	<u>6,140</u>
Examination fee	950	950
Governance, training & review	840	840
Trustee's expenses (note 6)	-	-
	<u>1,790</u>	<u>1,790</u>
Support expenditure	<u>16,454</u>	<u>7,930</u>

6 Trustees' Remuneration and Benefits

Neither the trustees nor any persons connected with them received remuneration for any for their services. Where claimed, expenses for travel and subsistence are reimbursed. The amount claimed during the period was £Nil (2022: £Nil).

Learning Disability England
Notes to the Accounts
Statement of Financial Activities
as at 31 March 2024
7 Staff Costs

	2024	2023
	£	£
Salary Costs	131,617	134,513
Tax and National Insurance	28,027	36,144
Pension Costs	8,671	9,310
Other Costs including Training & Welfare	2,754	4,019
Total salaries, wages and related costs	171,069	183,986

The average number of employees during the year was as follows:

	2024	2023
	£	£
Full time equivalents	5.5	5.5

No employees received emoluments in excess of £60,000.

8 Tangible fixed assets

	Plant and Equipment
	£
Cost	
At 1 April 2022	6,576
Additions during the year	-
At 31st March 2023	<u>6,576</u>
Depreciation	
At 1 April 2022	5,860
Charge for the year	352
At 31st March 2023	<u>6,212</u>
Net book value	
At 1 April 2022	<u>716</u>
At 31st March 2023	<u>364</u>

9 Debtors	2024	2023
	£	£
Trade debtors	54,474	34,349
Prepayments and accrued income	2,505	967
Total debtors	56,979	35,316

10 Creditors: amounts falling due within one year	2024	2023
	£	£
Trade Creditors	15,976	-
Accruals	8,765	4,843
Deferred Income	62,681	32,322
Grant & Project Balances	150,992	172,932
Other Creditors	2,122	2,122
Total creditors	240,536	212,219

Learning Disability England
Notes to the Accounts
Statement of Financial Activities
as at 31 March 2024

10 Creditors: amounts falling due within one year (continued)

Within grant & project balances are amounts received with preconditions attached. These amounts are released into income when the preconditions are met.

This includes restricted funds of:

SW Connections: £14,740
MMU Covid Impact research £16,896
BAME Self Advocacy NHSE (Equal Treatment): £23,832

11 Fund Balances

At 31 March 2024, funds are analysed as follows:

	At 1 April 2023 £	Net movement in funds £	Transfers between funds £	At 31 March 2024 £
Restricted Funds				
VCSE Health and Wellbeing Alliance	-	-	-	-
BAME Self Advocacy NHSE (Equal Treatment)	-	-	-	-
MMU Covid Impact Research	-	-	-	-
Speaking Up and More				
Total Restricted Funds	-	-	-	-
Designated Funds				
Membership administration and management	-	-	10,000	10,000
Membership growth	-	-	7,000	7,000
Unrestricted Funds	165,872	40,049	(17,000)	188,921
Total Unrestricted Funds	165,872	40,049	(17,000)	205,921
Total Charity Funds	165,872	40,049	-	205,921

Net movements included in the above are as follows:

	Incoming resources £	Resources expended £	Movement in funds £
Restricted funds			
VCSE Health and Wellbeing Alliance	23,450	(23,450)	-
BAME Self Advocacy NHSE (Equal Treatment)	4,550	(4,550)	-
MMU Covid Impact Research	14,050	(14,050)	-
Speaking Up and More	3,280	(3,280)	-
	45,330	(45,330)	-
Unrestricted funds	251,927	(211,878)	40,049
	297,257	(257,208)	40,049

Learning Disability England
Notes to the Accounts
Statement of Financial Activities
as at 31 March 2024
11 Fund Balances *(continued)*

At 31 March 2023, funds were analysed as follows:

	At 1 April 2022 £	Net movement in funds £	Transfers between funds £	At 31 March 2023 £
Restricted Funds				
Esmee Fairburn	17,515	(17,515)	-	-
VCSE Health and Wellbeing Alliance	-	-	-	-
BAME Self Advocacy NHSE (Equal Treatment)	-	-	-	-
MMU Covid Impact Research	-	-	-	-
NHSE Covid Recovery	-	-	-	-
		-		
Total Restricted Funds	17,515	(17,515)	-	-
Unrestricted Funds	164,567	1,305	-	165,872
Total Charity Funds	182,082	(16,210)	-	165,872
		Incoming resources £	Resources expended £	Movement in funds £
Restricted funds				
Esmee Fairburn		2,500	(20,015)	(17,515)
VCSE Health and Wellbeing Alliance		19,478	(19,478)	-
BAME Self Advocacy NHSE (Equal Treatment)		24,467	(24,467)	-
MMU Covid Impact Research		10,475	(10,475)	-
NHSE Covid Recovery		51,300	(51,300)	-
		108,220	(125,735)	(17,515)
Unrestricted funds		248,922	(247,617)	1,305
		357,142	(373,352)	(16,210)

Learning Disability England
Notes to the Accounts
Statement of Financial Activities
as at 31 March 2024
11 Fund Balances *(continued)*

Restricted Funds

Esmee Fairburn

Grant to support some of organisational core costs, to help ensure that the needs and wishes of learning disabled people are accurately represented in policy and decision making at national and local level. In addition Esme Fairburn granted LDE an unrestricted Covid response and support grant.

DHSC Covid 19 Support Grant

Grant funding to increase availability of support to people in England during COVID-19 2020/21 through providing Information and resources, supporting practice and operational change in response to Covid 19, and delivering a small grants programme aimed at reducing isolation and building resilience in local groups and their members.

CAF DCMS Resilience fund

Grant to maintain the extended information hub, dissemination, training and peer support activities for people with learning disabilities, their families and paid supporters that Covid 19 necessitated.

RTR Trust Sharing to be Stronger

Grant to Learning Disability England for the Sharing to be Stronger Together project that brought together self advocacy groups across England to share examples of self advocacy making a difference and contribute to the building of a national self-advocacy movement.

VCSE Health and Wellbeing Alliance

This grant which is provided by The Department of Health and Social Care for the purpose of supporting the Health and Wellbeing Programme through facilitating integrated working between voluntary and statutory providers. BILD is the lead organisation on this project and is responsible for liaising and reporting to the funders.

BAME Self Advocacy NHSE (Equal Treatment)

NHS England are supporting a project because reports have told them that people with a learning disability from minority ethnic groups do not get equal health care. This project includes aims to empower and support self-advocacy or family led groups to overcome barriers and taboos in relation to speaking up about racism and its impact on access to preventative healthcare and treatment.

MMU Covid Impact Research

This grant funds a project researching how the coronavirus pandemic has changed the lives of people with learning disabilities in the UK.

NHSE Covid Recovery

Funded by NHS England, this grant funds the development of a resource bank open for all self-advocacy groups to use. The resources will focus on easy read material and other tools and information to support people who may have difficulties accessing health services.

Speaking Up and More

Funded by a grant from RTR Foundation and the Baily Thomas Charitable Fund. The project worked with people with learning disabilities and self-advocacy groups to promote the impact of (self and peer) advocacy through an accessible short film led by self advocates.

Other restricted funds

Donations from Trusts are classed as restricted to the purpose as determined by the donor.

Learning Disability England
Notes to the Accounts
Statement of Financial Activities
as at 31 March 2024

11 Fund Balances *(continued)*

Designated funds

Membership administration and management	These funds are for the development and launch of a membership management system.
Membership growth	These funds are held for the purpose of a campaign to increase membership.

Unrestricted funds

These funds are held for the objectives of the charity, and to provide free reserves for future activities, and, subject to charity legislation are free from all restrictions on their use.

12 Related Parties

Some trustees are employed by member organisations, membership subscriptions are shown below:

Organisation	Membership package	Trustee
Choice Support	LDE Enhanced member £2,500	Sarah Maguire
SeeAbility	LDE Enhanced member £2,500	Lisa Hopkins
Jan Walmsley Associates	LDE Standard member £195	Jan Walmsley (up to April 2023)
Look Ahead	LDE Standard member £995	Debbie Neill (up to July 2023)
Vibrance	LDE Standard member £996	Debbie Neill (after July 2023)
Building Bridges CIC	LDE Self advocacy member £25	Liz Tilly
Future Directions CIC	LDE Standard member £995	Paula Braynion

13 Ultimate Controlling Party

The charity is wholly under the control of the board of Trustees.

14 Status of the Charitable Company

The charitable company is limited by guarantee and does not have share capital. The registered office is 134 C/O Anthony Collins Solicitors, Edmund Street, Birmingham, England, B3 2ES.

Its principal activities are the relief of people who are disabled, handicapped (whether physically or mentally) or chronically sick people, their families and carers in particular through the provision of advice, counselling, workshops, training, and advocacy in respect of their housing care or support needs.

The liability of members is limited but is not exceed £1 per member.