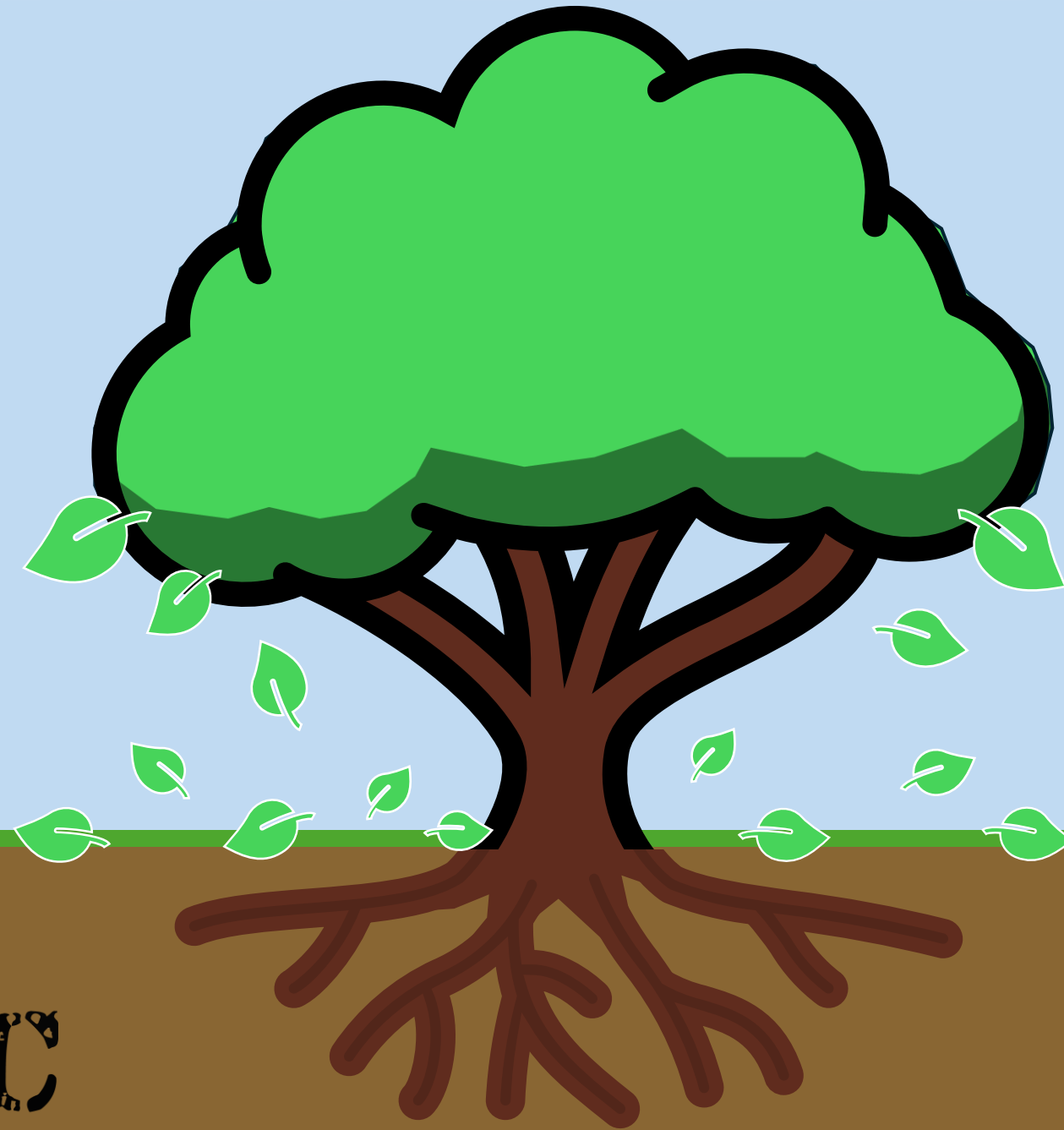


Tree of a Good Life



C4C
Campaign 4 Change

Who are Campaign 4 Change

Campaign 4 Change is a self and peer advocacy group for people with learning disabilities and autistic people. Members campaign and raise awareness of different issues. They stand up for the rights of people with learning disabilities and autistic people on a national and local level, and work in partnership with other organisations.



Today's presenters



Francesca Dunn – a self-advocate member of Campaign 4 Change, passionate about raising the voice of people with profound and multiple learning disabilities, making sure people are not forgotten, visible and included. Enjoys getting her nails painted, watching Bridgerton and going to see shows with dad.



Clayton Maragh - a self-advocate member of Campaign 4 Change, Advocacy for All Sutton, Speak Up, LD Working People and co-production group Unity. Passionate about human rights and respect for people with learning disabilities. Enjoys researching his family tree and diecast model cars.



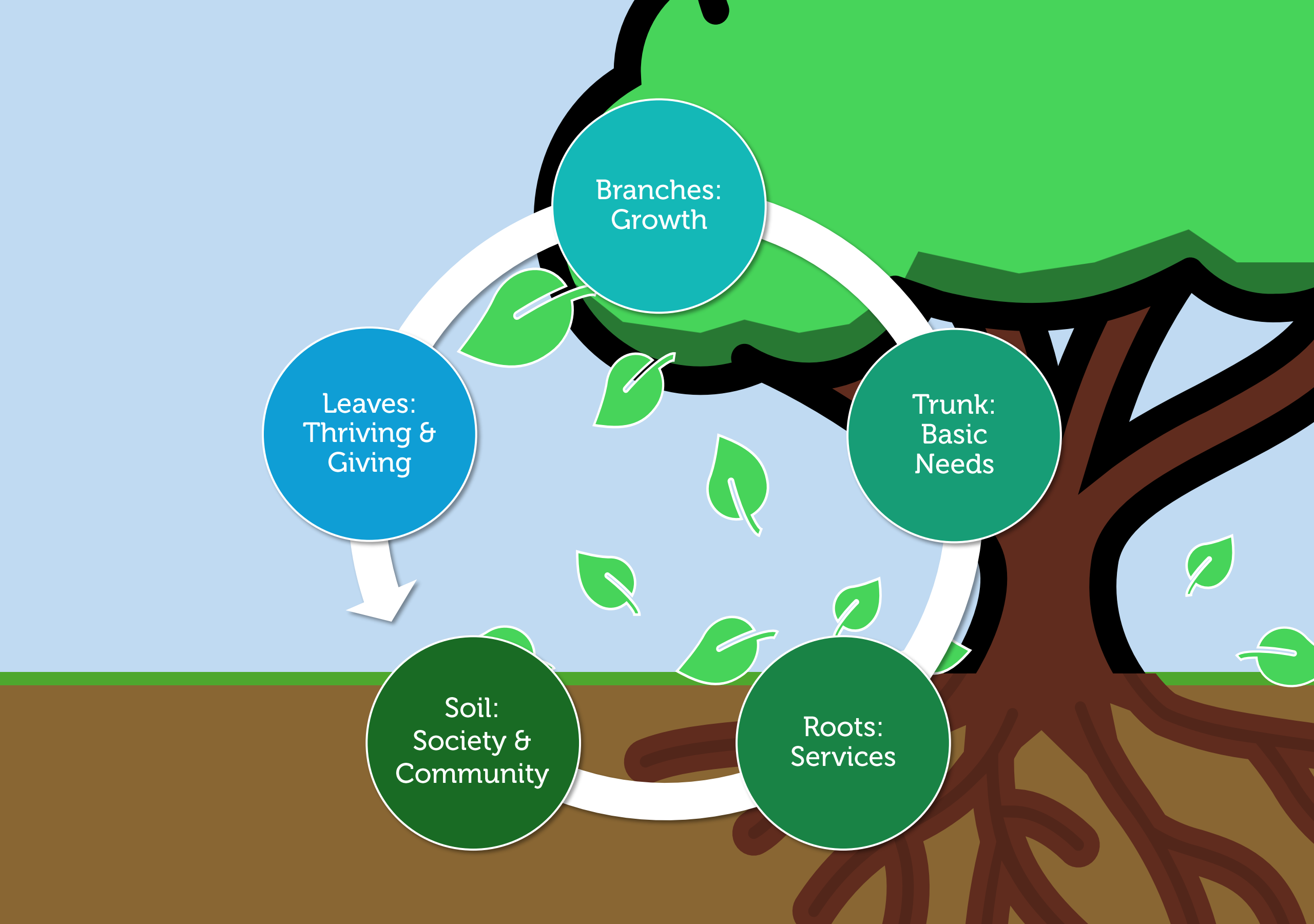
Crystal Higgins - a self-advocate member of Campaign 4 Change and co-production group Unity. Passionate about training people who work in social care and women's wellbeing. Enjoys organising events and parties, wants a pet snake.

Tree of a Good Life

Campaign 4 Change were talking about what things need to happen for people with learning disabilities and autistic people to have a good life.

We decided to compare a good life to a strong, beautiful tree which needs the right conditions to grow well.





Branches:
Growth

Trunk:
Basic
Needs

Roots:
Services

Soil:
Society &
Community

Leaves:
Thriving &
Giving

Soil: Society & Community

Human Rights



Awareness & understanding



Valuing everyone



Kindness



Respect




Open mind




Equality





If you were in charge, how would you make sure that people with learning disabilities and autistic people are valued and equal members of our communities and society?



A close-up photograph of a shovel digging into rich, dark brown soil. The shovel's metal head is partially buried in the earth, and its wooden handle extends upwards. The background is softly blurred, showing green foliage and warm, golden light filtering through, creating a bokeh effect. A semi-transparent white rectangular box is overlaid on the upper portion of the image, containing text.

Healthy soil feeds the roots.

In the same way, a good society and community ensures good services for its people.

Roots: Services

Choice &
control



Great support



Great
housing



Accessibility



Great
healthcare





Safety



Funding





If you were in charge, how would you make sure that people with learning disabilities and autistic people get access to good services?



Strong roots grow a thick trunk.

In the same way, good services ensure people's needs are met.

Trunk: Basic Needs

Circle of support



Communication & accessibility



Choice & control



Having a voice



Wellbeing



Stability & security




Person-centred support




Freedom to be yourself





If you were in charge, how would you make sure support teams understand how to meet people's basic needs?





A strong trunk can support long branches.

In the same way, if people's needs are met, they have a good foundation for growth.

Branches: Growth

Education



Hobbies



Opportunities



Activities



Goals &
Purpose




Social Life




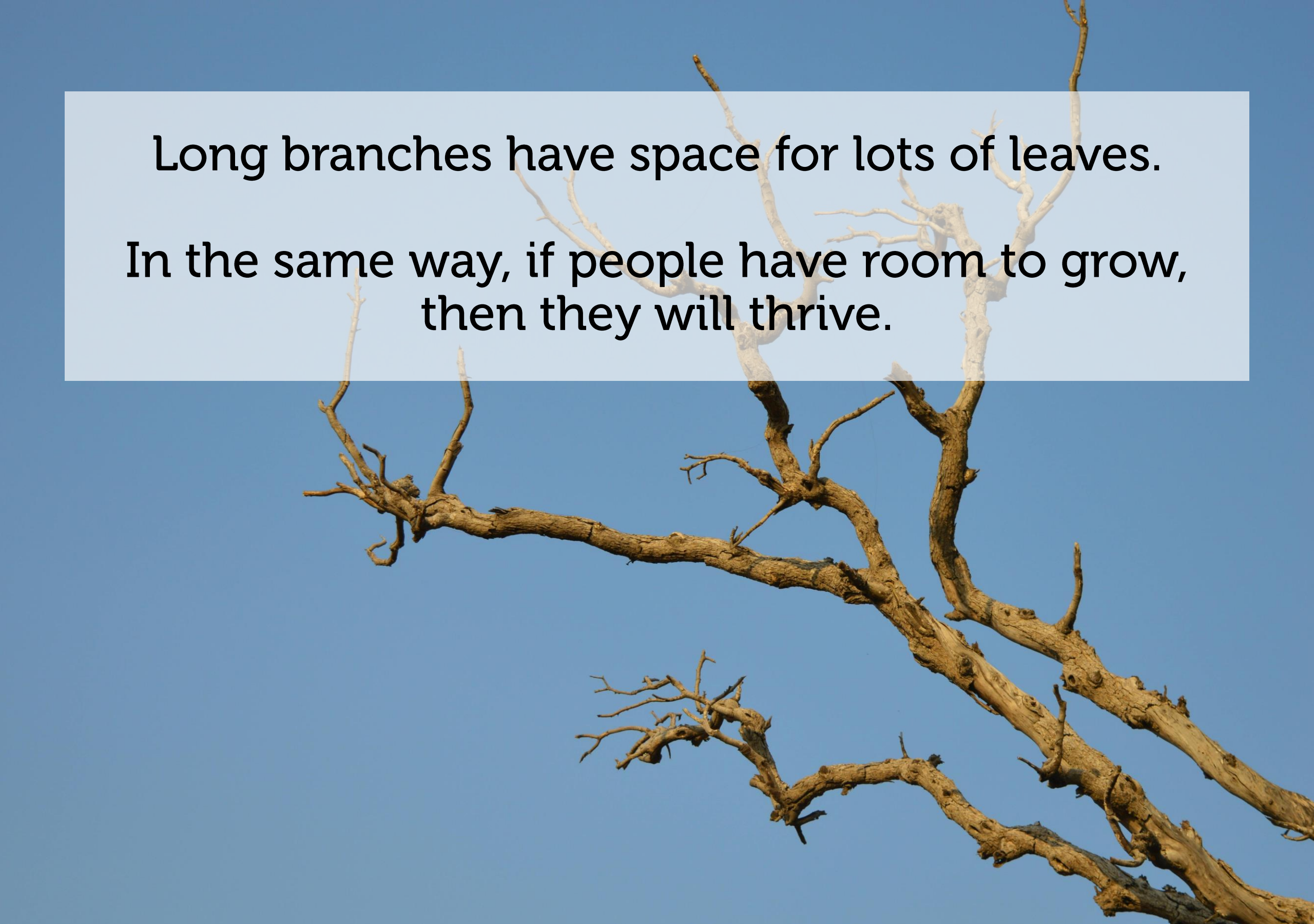
Skills &
Talents





If you were in charge, how would you make sure that people with learning disabilities and autistic people have opportunities to grow and learn?



A large, gnarled, leafless tree branch is shown against a clear blue sky. The branch is thick and textured, with several smaller, thinner branches extending from it. The lighting suggests a bright, sunny day. The branch is positioned diagonally across the frame, from the bottom right towards the top left.

Long branches have space for lots of leaves.
In the same way, if people have room to grow,
then they will thrive.

Leaves: Thriving & Giving

Work



Being part of
community



Going places
you like



Doing things
you like



Entertainment




Doing things
for others




Extra income





If you were in charge, how would you make sure that people with learning disabilities and autistic people are able to thrive and give back to their communities?



Leaves fall and feed the soil.

In the same way, thriving people give back
to their communities.

